



# MXE2000



## Ellipse Blending System

Ellipse Blending System

### New and Improved Sound Enclosure

Completely redesigned to further help **reduce noise and vibration, proving you can still have commercial power without commercial strength noise.** Retrofittable to use with all MX bases via the new jar pod and adaptor ring. No tools required!

The New SE1500 Sound Enclosure is required for Auto Start mode.



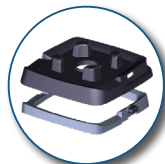
### Drive

Lithium-powered Ellipse Drive powers the Dasher system to rotate within the jar. Ellipse drive is controlled via 2 modes:  
1 - **Manual** - choose from 10, 15 or 20 seconds of operation via push buttons  
2 - **Auto Start** - automatically starts and runs for 30 seconds when Sound Enclosure is closed.



### Lid and Dasher System

2-part assembly that helps expedite the blending process by breaking up and preventing the formation of air pockets by pushing ingredients back into the blade thus **reducing blend times and eliminating the need for a tamper.**



### Jar Pad and Adaptor Ring

**Sheds liquids** keeping it clean and preventing material from getting into motor housing.



### Docking Station

A hollow base designed to **store the Ellipse Drive between blends for easy access.** Docking Station can be placed in any direction under the base for user-convenience.



### Charging Station

Charge your Drive in 2-hours!  
**One charge will last one full service day!**

Additional Single and Triple Charging stations sold separately.

Triple Charging Stations are ideal for larger volume establishments such as chain restaurants.



Experience the power of top-down blending that propels you beyond the limits of physics.

The Ellipse is the only **fully automated blending solution** that is powered from the top-down. It uses an **Independent Dual-Motor System**, to expedite the blending process, ensuring that your blend is consistent and to your desired quality every time!



The Ellipse utilizes the strongest and **most powerful blender base** in the Waring line, the **MX1500!**

- Powerful 3.5 HP, 30K RPM motor
- Electronic-membrane keypad with blue backlit LCD screen
- Adjustable speed controls and four programmable beverage stations
- Dual PULSE feature with reprogrammable speed control



### Cylindrical Jar Design

Allows for the dasher to effortlessly rotate around the inside walls and scrape all contents back into the blade while blending, **dramatically reducing the occurrence of bridging and the formation of air pockets.**

\*Made in USA with US and foreign parts.



@waringcommercial

©2022 Waring Commercial  
314 Ella T. Grasso Avenue, Torrington, CT 06790  
Tel. 800-492-7464 • Fax 860-496-9008

waringcommercialproducts.com

MXE2000

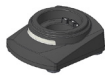


# Ellipse Blending System MXE2000

## INCLUDED ACCESSORIES



**MXEBU**  
Ellipse Base Unit  
(includes Base Unit, Jar  
Pad and Adaptor Ring)



**MXECHG1**  
Ellipse Single  
Charging Station



**MXEFJA**  
Ellipse Full Jar Assembly  
(includes Jar, Lid,  
Dasher, and Drive)



**MXEDS1**  
Ellipse Docking Station



**MXEDR**  
Ellipse Drive



**SE1500**  
Sound Enclosure Kit  
(includes Sound  
Enclosure, Jar Pad  
and Adaptor Ring)

## OTHER ACCESSORIES



**MXECHG3**  
Ellipse Triple  
Charging Station



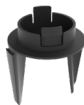
**CAC198**  
Ellipse Jar Pad  
and Adaptor Ring



**CAC188**  
32 oz. Cylindrical  
Copolyester Container



**CAC119**  
Retainer Ring Wrench  
for CAC93X, CAC95  
& CAC188  
(to remove blending  
assembly from container)



**CAC192**  
Ellipse Dasher



**CAC187**  
Jar with Dasher, Lid  
and Blade Assembly



**CAC193**  
Ellipse Lid  
(includes gaskets)



**CAC190**  
Complete Retrofittable  
Kit for MX Series  
Blender Bases



**CAC194**  
Ellipse Blade Assembly



**CAC197**  
Ellipse Jar Pad

Out-of-Box Weight: 20 lb.

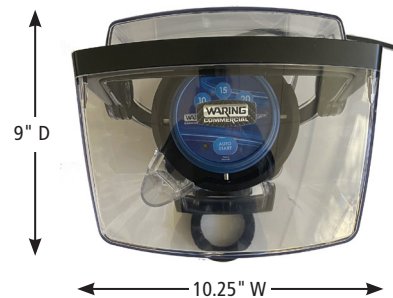
## DIMENSIONS



20.5" H

14" D

9" W



9" D

10.25" W

## ELECTRICAL

Voltage: 120V

Frequency: 60Hz

Watts: 1500W

Amps: 12.5A

Plug Type: Type A

Cord Length: 6 feet



ORDERING INFORMATION	#STD. PKG.	GIFTBOX WEIGHT	CUBIC FEET	BOX DIMENSIONS L x W x H	UPC	CASE PKG.	MC WEIGHT	MC DIMENSIONS L x W x H	MBC
MXE2000 – Ellipse Blending System	1	23 lb.	2.69	18.75" x 11.125" x 22.25"	040072099038	1	24 lb.	19" x 11.5" x 22.875"	10040072099035



@waringcommercial

©2022 Waring Commercial  
314 Ella T. Grasso Avenue, Torrington, CT 06790  
Tel. 800-492-7464 • Fax 860-496-9008

waringcommercialproducts.com

22WC084694 / REV 11/22